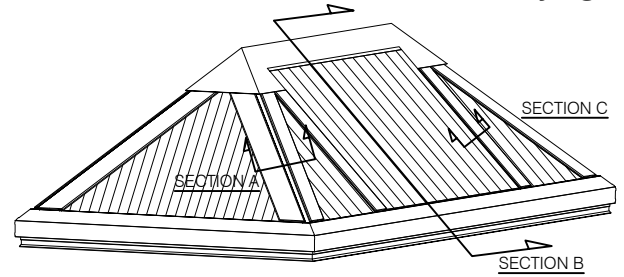


Skylights conform to and exceed test requirements of CAN/CGSB-63.14M89, "Plastic Skylights", Class A, Type 2 or Type 3.

Skylights are suitable for use on flat roofs only. Designed for mounting on 3"(75mm) or 4"(102mm) curbs with flashing (by others), The flexible design makes it easy to achieve larger daylight openings, while providing an excellent alternative as a lightweight assembly to traditional heavy glass systems.

- Custom sizes are available upon request

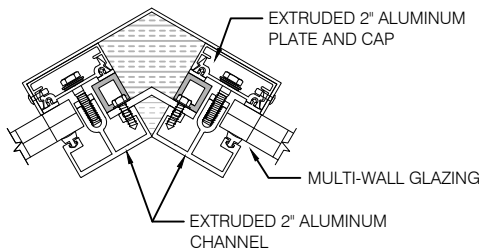


Model MW-CU-P-CF-FF Available Sizes				Project:
Model #	Outside Curb Dimensions	Glazing Type	QTY	Contractor:
MW-CU-P-CF-FF-42	40" x Unlimited (1016mm x Unlimited)			Architect:
MW-CU-P-CF-FF-52	49½" x Unlimited (1251mm x Unlimited)			
MW-CU-P-CF-FF-60	58" x Unlimited (1473mm x Unlimited)			Approved By:
MW-CU-P-CF-FF-72	70" x Unlimited (1778mm x Unlimited)			
MW-CU-P-CF-FF-96	92½" x Unlimited (2350mm x Unlimited)			Date:
MW-CU-P-CF-FF CUST.				
MW-CU-P-CF-FF CUST.				
Glazing Available				
Glazing Type	Colour Code	Glazing Type	Colour Code	
Clear	C	White	W	
Bronze	B			

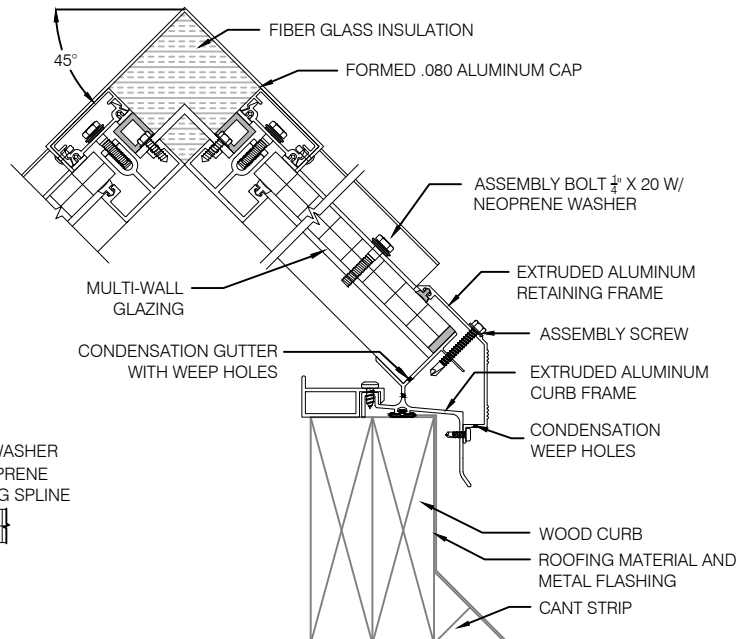
Specifications:

Skylight shall be factory assembled Model No. _____ MW-CU-P-CF-FF as manufactured by Artistic Skylight Domes Ltd. Vaughan, Ontario. Glazing shall consist of 16mm multi-wall polycarbonate panels (optional 25mm) in clear, optional bronze or translucent white. The skylight shall consist of corrosion resistant extruded aluminum curb frame, 6063-T5 alloy, with heliarc welded corners. The skylight curb frame shall have an extruded aluminum vinyl thermal break, with high capacity, sloped condensation gutter and drainage to exterior. The retaining cap frame shall be extruded, mill finish, 6063-T5 aluminum alloy with heliarc welded corners. Ridge shall consist of double 3" (rafter of single 3") mill finish extruded aluminum channel and pressure plate of 6063-T5 alloy, with keyed in place Santoprene gaskets. Rafters to be at 4' (1219mm) spacing. Options include painted, anodized or powder coated finishes on aluminum.

SECTION A



SECTION B



SECTION C

